



Catalog Number		SPORTSLIGHTER _ _ _ _
Notes	Type	

FEATURES & SPECIFICATIONS

Application

The Sportslighter by Techlight is used for recreational or competitive areas. Parking and industrial locations as well as docks and other outdoor lighting needs.

Housing

Powder coated Dia-cast housing with a hydro formed aluminum lid. Die- cast aluminum socket provides vertical aiming adjustment complete with degree aiming scale and repositioning stop.

Ballast

Available in 400W, 1000W or 1500W MH in Multi-tap and 480v.

Lens/Gasket

Tempered flat glass lens and gasket with aluminum clamp band.

Optics

Heavy-guage anodized aluminum reflector available in Type VI.

Listing

ETL listed suitable for wet locations.

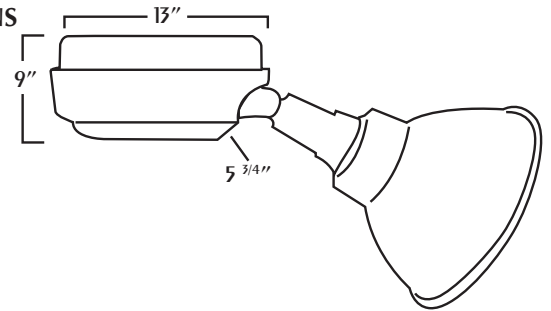
SPORTSLIGHTER SERIES



SPORTSLIGHTER / YOKE



DIMENSIONS



OPTIONS

P20SBC - CORD AND PLUG

MOUNTINGS & SHIELDS



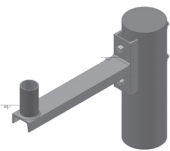
SP50PT - Pole Top Mount OR FOR CROSSARM W/TENON



SP50YOKE- Yoke Mount



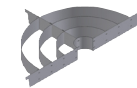
SP50CGS - Full INTERNAL Shield



SP50WPB - Sportslighter Pole Top Mount with TENON OR FOR CROSSARM - ALSO AVAILABLE WITHOUT TENON.



S144 - Visor Shield



SP50HCGS - Half INTERNAL Shield

ORDERING NOMENCLATURE

SPORTSLIGHTER	4	1	5	6	1	1	1
SERIES	REFLECTOR	GLASS/CLAMP	BALLAST	LAMP	MOUNTING	SHIELD	COLOR
SPORTSLIGHTER	1 = SP50AR3 2 = SP50AR4 3 = SP50AR5 4 = SP50AR6 5 = SP50AR2	1 = SPGL23 2 = SPGL22 3 = SPGL20	1 = SPS400MHMT 2 = SPS400MH480 3 = SPS1000MHMT 4 = SPS1000MH480 5 = SPS1500MHMT 6 = SPS1500MH480 7 = SPS1000HPSMT	1 = MH400U 2 = MH400UGRN 3 = MH1000U 4 = TLMH1000GRN 5 = MH1500BU 6 = TLMH1500GRN 7 = HPS1000 8 = MH1500-D/HOR	1 = SP50PT 2 = SP50YOKE	1 = S144 2 = SP50CGS 3 = SP50HCGS	1 = Bronze 2 = Black 3 = White 4 = Special